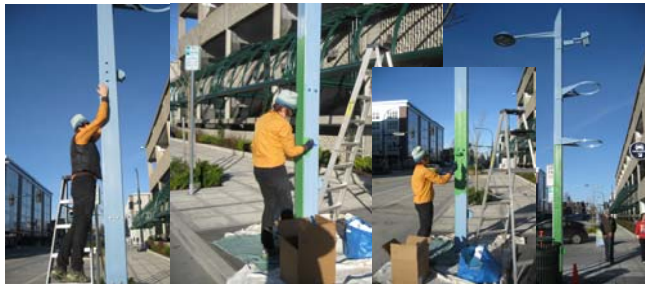


### Hoyt Ave Art District—kitschy new street lights

Artist Susan Zoccola (pictured at right) cleans and paints the lower half of the blue light poles in front of the Everpark Garage at 2815 Hoyt Ave in preparation for the addition of “Lily of the Valley” light fixtures arching over the sidewalk.

Installation of the eight fixtures on Hoyt Ave from Wall St to Everett Ave required a very large crane. Susan (pictured lower right hauling globes and light bulbs from the Everpark Garage staging area) has a very strong working team (bottom center in front of the Schack Art Center, 2921 Hoyt Ave).

The next phase of light pole decoration will be the addition of art discs in a light fixture just above the arching globes. These art discs will project circled art pictures onto the sidewalks below, creating a lovely artistic walkway.



### Farmers Market—mixed use development breaks ground

In late 2012, the extended stay hotel component of the Pagoda Village project broke ground at the corner of West Marine View Drive and Wall St. According to the Pagoda Village website, the project will include an indoor farmers market, office space, assisted living facilities, luxury apartments, as well as an upscale extended stay Hampton Inn by Hilton hotel. The website also states that Path America’s Everett Pagoda Village is an ex-



citing new project that partners with the City of Everett and Snohomish County. The three major components are the hotel, the Farmers Market with the Snohomish County Growers Alliance, and 220 units of residential living over the Farmers Market on Grand from Wall St to Hewitt Ave. For more information, visit [www.pathamerica.com](http://www.pathamerica.com).

#### Inside this issue:

<i>Port of Everett—North Marina colorfully active</i>	2
<i>Everett Arts Plaza—taking shape &amp; new name</i>	2
<i>Everett Theatres—top notch entertainment</i>	3
<i>Downtown Everett—colorful living/working</i>	
<i>Visit downtown cityscapes and sculptures</i>	4
<i>Comcast Arena at Everett</i>	4
<i>Everpark Garage—over 200 Free spaces</i>	4
<i>Graffiti control inside/outside BIA—graffiti hotline 425-257-8748</i>	4
<i>FREE No Trespassing Signs for DEA members</i>	4



### Port of Everett—North Marina colorfully active

The newest addition to the Port of Everett is the North Marina, which has been enjoying consistently high use since it opened. The Port offices are located in an attractive facility there. The Marina is a wonderful place to walk, jog, or ride a bicycle, and for those who berth a boat, the amenities are improving all of the time. During the first part of March, the sun broke through, allowing many to enjoy the North Marina’s panoramic view, the peaceful atmosphere, the several pieces of artwork installed in strategic locations. Ever-growing is interest in the new Scuttlebutt Restaurant and the Blue-water Organic Vodka Distillery.



### Everett Arts Plaza—taking shape & new name

The Everett Arts Plaza is fulfilling its promise as a pleasing and utilitarian gathering place. The fountain is fully operational, with its own glass artwork bathed by a mini-geyser. The stage area is spacious, shielded by a concrete wall. The back, or alley side, of this wall is complete with multicolored glass tiles; the front, facing the stage, will be similarly decorated during warm, dry weather later this year. The Everett Planning Department has issued an invitation to interested parties to suggest names for the plaza; their number, as indicated in the picture below, is 425-257-7164. Students of the Second Stage, their parents, and teachers are fortunate to have this beautiful venue and are encouraged to enjoy it often.





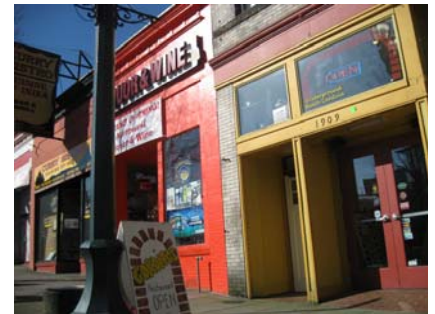
### Everett Theatres—top notch entertainment

Everett Performing Arts Center/Village Theatre, Historic Everett Theatre, Everett Civic Auditorium, Second Stage (KidStage), and PUD Auditorium bring a variety of top notch entertainment to the City of Everett. Films, drama, comedy, plays, musicals, festivals. On New Year's Eve 2012, the Historic Everett Theatre hosted a comedy show with jazz music. The Everett Performing Arts Center has consistently offered professional-level acting, singing, and dancing in a litany of classic plays and musicals, such as Big River (based on Mark Twain's Huckleberry Finn), Mel Brooks' The Producers, Agatha Christie's The Mousetrap, Fiddler on the Roof, and many others. Everett has excellent amateur companies as well. Be sure to attend.



### Downtown Everett—colorful living/working

Many people in our society work in large, lackluster office buildings nestled among other uninspiring structures. Not so in Downtown Everett! The structures in our Central Business District include many colorful designs originating from various decades. All of these enhance the workplace and make for a more pleasurable, relaxing workday. Many new retailers, service businesses, and eating establishments have gone the extra mile to incorporate eye-catching signage and vivid color schemes to draw attention and beautify their buildings, and all who patronize these businesses are fortunate to have such variety. The pictures below exhibit a mix of upgraded classic décor with bold colors and clean modern designs. Among the buildings shown are the Marion, the Grand Leader, the Evergreen, the Schack, Library Place, and Integra Telecom.





P O Box 748  
Everett WA 98206

Phone/Fax: 425-258-0700  
Cell Phone: 425-876-2158, E-mail:  
[sue.strickland@downtowneverett.org](mailto:sue.strickland@downtowneverett.org)

Downtown Everett  
Live - Work - Play



The Downtown Everett Association (DEA) is committed to advancing and growing Downtown Everett as a vibrant economic, cultural, and governmental center through leadership, advocacy, and the ongoing administration of a business improvement area (BIA). The organization's membership is comprised of property owners who support the revitalization of Everett's historic central core through annual fee assessments. Visit the DEA website for more information.



Sue Strickland  
Downtown Services Manager

Comcast Arena at Everett hosted the 11th Home and Garden Show in March. Comcast is home to Everett Silvertips Hockey and Washington Stealth Lacrosse, in addition to providing outstanding touring entertainment for all ages.



The Home and Garden Show set up a tent to welcome visitors at the Comcast entrance on Hewitt and Rockefeller. Visit [www.comcastarenaeverett.com](http://www.comcastarenaeverett.com).

Visit downtown city-scapes and sculptures, see more on-line at [www.ci.everett.wa.us](http://www.ci.everett.wa.us).

Take a walking tour of the lovely art sculptures on Colby from Wall to 26th Street and on Wall, Hewitt and California from Wetmore to Hoyt, and the Everett Events Center at Hewitt and Broadway. Remember to visit the newly developing Hoyt Ave Arts District, enjoying new light fixtures and sculptures. Also, take in a City Council meeting on Wednesdays and marvel at the art deco building and chambers.



There are over 200 **FREE parking** spaces after 6:00 PM and on weekends at the well-lit, easily accessed Everpark Garage at 2815 Hoyt Avenue. *Drive in and park.*



All photos for the newsletter are copyright by Sue Strickland.

Newsletters printed by **Evergreen Printing & Graphics**, 10530 19th Ave SE #103, Everett, WA, 425-338-2900.

**Graffiti control graffiti hotline 425-257-8748**

Weed control and graffiti removal are part of the BIA maintenance service for DEA members. Therefore, if you need help inside the BIA boundaries, please contact Sue Strickland, 425-258-0700, or Rich Webber, 425-238-7071.

*Before removal, call the police, give location, ask that they take a picture, notify Lt. Jim Phillips — [jphillips@ci.everett.wa.us](mailto:jphillips@ci.everett.wa.us), then remove the graffiti.*



**FREE No Trespassing signs for DEA members**



The DEA Board of Directors elected to provide FREE No Trespassing signs to DEA members. The DEA logo appears on the black and white signs. They are available in two sizes, 24" x 18" or 18" x 12". Contact Sue Strickland at 425-258-0700 to order your signs and make arrangements to pick them up.

*Note: Go to the DEA website to view all of the newsletters.*