



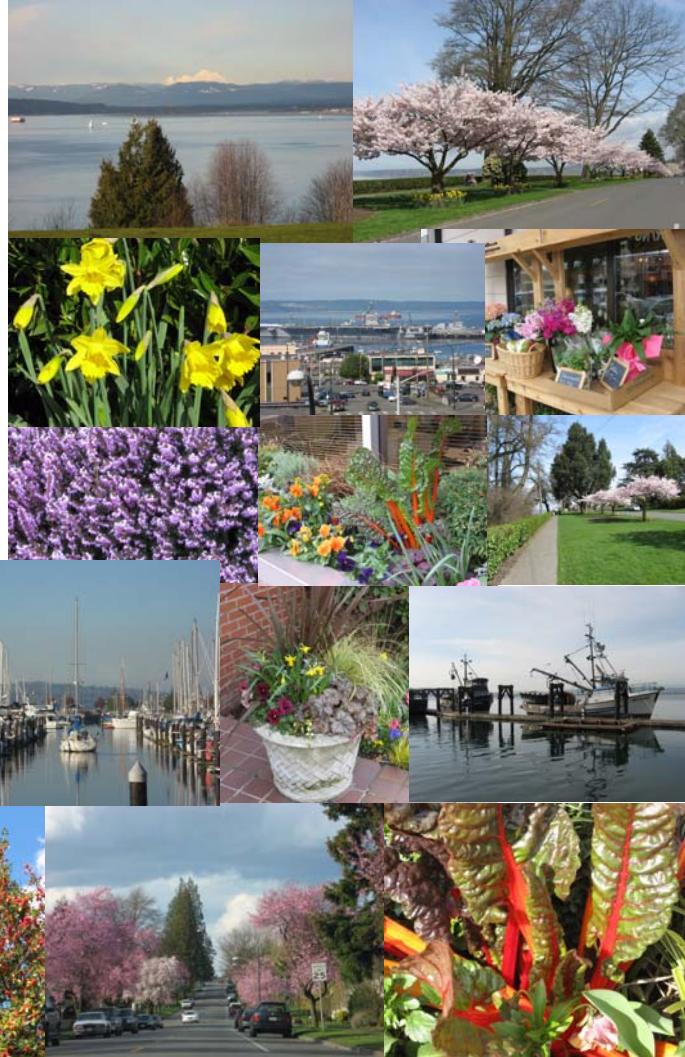
DOWNTOWN EVERETT ASSOCIATION

The Communicator
Jan Feb Mar 2008

Volume 3 Number 1

Colorful tree-lined streets, marina, parks, mountains to enjoy

Spring beauty abounds in Everett. Some trees stay green while others begin to show lovely blooms. There are plantings in cityscapes, downtown area parks, merchant window boxes and planters, city planters, and breezeways. The parks department refurbishes the planters in the spring and again in the fall. Enjoy the daffodils, lavender, kale, rhubarb, and more. Marina folks, both recreational and commercial, take to the water. Sound thinking. With a view.



Inside this issue:

<i>Sustainable Energy Fair</i>	2
<i>Graffiti control inside/ outside BIA— new graffiti hotline 425-257-8748</i>	2
<i>Everett High School Jazz Band</i>	2
<i>Everpark garage—new canopies & panel</i>	2
<i>BIA, contract mainte- nance opportunity</i>	2
<i>Artist of the Year— Reg Akright</i>	3
<i>Downtown retail rates with the best</i>	3
<i>Development—on the move in downtown Everett</i>	3
<i>Girls Night Out</i>	3
<i>Downtown Everett Parking Study</i>	4
<i>Everpark garage cele- brates staff birthdays</i>	4
<i>FREE No Trespassing Signs for DEA members</i>	4

DEA 2008 officers, directors, and meeting dates

Kim Bedier, President
Comcast Arena at
Everett Events Center

Timothy Corpus, Vice Pres
Studio Donna

Karen Shaw, Secretary
City of Everett

Lars Johnson, Treasurer
Cascade Bank

JoAnn Burkett, Director
Burkett's

C. J. Ebert, Vice President
Port Gardner Partners

Steve Hager, Director
2702 Colby LLC

Craig Skotdal, Director
Skotdal Real Estate

Joel Starr, Director
Tailgater Joe's

Bill Quistorf, Immd Past Pres
Renee's

The latest DEA quarterly board meeting was held at 3:00 PM, Thursday, March 20, downstairs at The Flying Pig Restaurant & Bar, 2929 Colby.

Note: Change of meeting location and time.

The following meetings will be held on

Thursdays at 1:00 PM in the Edward D Hansen Conference Center at Comcast Arena at the Everett Events Center, 2000 Hewitt.

Quarterly Board Meetings

June 19

September 18

Annual Meeting of Members and Annual Board Meeting

December 18



Sustainable Energy Fair

In October 2007, the Sustainable Energy Fair was held at the Public Utilities Department (PUD) headquarters on California. The fair is a solution-based, hands-on, family oriented event designed to educate people of all ages and backgrounds about sustainable living practices and renewable energy. Fun, participatory event for everyone.



Graffiti control inside/ outside BIA—new graffiti hotline 425-257-8748

Weed control and graffiti removal are part of the BIA maintenance service for DEA members. Therefore, if you need help inside the BIA boundaries, please contact Sue Strickland, 425-258-0700, or Rich Webber, 425-238-7071.



Let's all do our part to keep this blight under control. *Before removal*, take a picture of graffiti and send it along with the location to Sgt. Jim Phillips — jphillips@ci.everett.wa.us.

Everett High School Jazz Band

Under the leadership of music director Gary Evans, the Everett High School 50-student strong Jazz Band gave a fantastic 1930s to 1960s big band performance last fall in the school's performing arts theatre, featuring talented vocal and instrumental soloists. The music was exciting and the

performances very professional. Everett High on Colby has one of the largest band programs in the area with over 150 students.



Everpark garage—new canopies & panel

High winds this winter necessitated replacement of stairwell roof canopies at the Everpark Garage. Blue canopies were replaced with green ones with white backing, giving the stairwells added light, shown below. Replacement of a damaged east-side panel was recently completed,

shown at right below. The panel was extremely heavy and handled with great care. It took six days to complete the installation.



BIA, contract maintenance opportunity

The Downtown Everett Association is seeking letters of interest in a 3-year contract for an outside maintenance provider with experience in landscaping and the ability to coordinate with City facilities, parks, and traffic departments. Under the direction of the Downtown Services Manager in specified downtown areas, the contractor will provide at least the following daily services: sidewalk and alleyway cleanliness maintenance, graffiti removal, trash removal, and weed control. Some weekend work may be necessary. Submit letters of interest by 5:00 PM, April 7, 2008: Downtown Everett Association, PO Box 748, Everett WA 98206. EOE.



Artist of the Year—Reg Akright

Congratulations to Everett artist and sculptor, Reg Akright. Reg was named 2008 artist of the year by the Arts Council of Snohomish County. See his artwork and sculptures, some pictured at right and below, at the council's gallery in the Monte Cristo on Wall Street between Colby and Hoyt.



Development – on the move in downtown Everett

The old Elks Club is making way for the new Skotland Real Estate project Library Place, between Rucker and Hoyt on the north side of California. The new Elks Club is being built across the street at the corner of California and Hoyt. The Elks Club now has framework for their new building, two pictures below left. The 200-unit, multi-building, mixed-use Library Place complex is working on preparing for its foundations, four pictures lower right. More pictures to come as the projects progress. Also, shown at lower left is a picture of renovations to the Anchor Tavern at the west end of Hewitt.



Downtown retail rates with the best

Enjoy the beauty of Everett inside, too. The pictures below show artwork and gifts inside Everyday Epiphanies, Royal Bou-

tique, and Starbucks, on Colby, and The Gallery Store on Wall.

Visit more retailers on Colby: Abbey Carpets, Burkett's, Enchanted Florist, Erickson's Jewelers, Everett Comics and Cards, Interior Fix, J Matheson Gifts, Katie O Fine Jewelry, Kitchen & Gourmet, Printer Ink Source, Renee's, Treasure House, Tulley's, and Wicked Cellars.

On Hewitt: Apollo's Bird Store, The Cowboy Store, The Loaner Pawn Shop, Mimi's Urban Wear, Moonflower Magicks, Tommy's Guitar Shop, and Van Winkles Interiors.

On Wetmore: Awards of Praise, Beyond The Blue, Pilchuck Books, Sound Loan, and Wise Design.



Girls Night Out

Area handcraft artists display their wares, below, at the Arts Council of Snohomish County's annual Girls Night Out held in the Monte Cristo gallery and conference center on Wall. Handcrafts include jewelry, leather goods, clothes, scarves, handbags, shoes, food, etc. Attendees participated in a cakewalk for handcrafted prizes.





P O Box 748
Everett WA 98206

Phone/Fax: 425-258-0700
Cell Phone: 425-876-2158, E-mail:
sue.strickland@downtowneverett.org

Downtown Everett
Live - Work - Play



The Downtown Everett Association (DEA) is committed to advancing and growing Downtown Everett as a vibrant economic, cultural, and governmental center through leadership, advocacy, and the ongoing administration of a business improvement area (BIA). The organization's membership is comprised of property owners who support the revitalization of Everett's historic central core through annual fee assessments. Visit the DEA website for more information.



Sue Strickland
Downtown Services Manager

Downtown Everett Parking Study

The City of Everett, Downtown Everett Association, business improvement area (BIA), and Everett Chamber of Commerce are assisting with the downtown Everett Parking Study being conducted by traffic consultants Clark Worth, Barney & Worth, and Rick Williams, Lloyd District, of Portland. The consultants recently conducted on-street parking survey, received customer and business owner survey

information, and held an informative Parking 101 Symposium and two interactive Parking Forums, see below. We look forward to learning about recommendations from the study.



Visit downtown city-scapes and sculptures, see more on-line at www.ci.everett.wa.us.

Take a walking tour of the lovely art sculptures on Colby from Wall to 26th Street and on Wall, Hewitt and California from Wetmore to Hoyt, and the Everett Events Center at Hewitt and Broadway. For more beauty, visit the Everett Public Library, shown below center and at right, at the corner of Hoyt and Everett, and the Everett Transit Station at Pacific and Smith, below at left.



There are over 200 *FREE parking* spaces after 6:00 PM and on weekends at the well-lit, easily accessed Everpark Garage at 2815 Hoyt Avenue. *Drive in and park.*



All photos for the newsletter are copyright by Sue Strickland.

Newsletters printed by *Evergreen Printing & Graphics*, 10530 19th Ave SE #103, Everett, WA, 425-338-2900.

Everpark garage celebrates staff birthdays



On a warm winter's day, one family travels in style on Colby and Hewitt.



FREE No Trespassing signs for DEA members



The DEA Board of Directors elected to provide FREE No Trespassing signs to DEA members. The DEA logo appears on the black and white signs. They are available in two sizes, 24"x18" or 18"x12". Contact Sue Strickland at 425-258-0700 to order your signs and make arrangements to pick them up. At that time, she will explain the "no trespass" form to file with the police department.